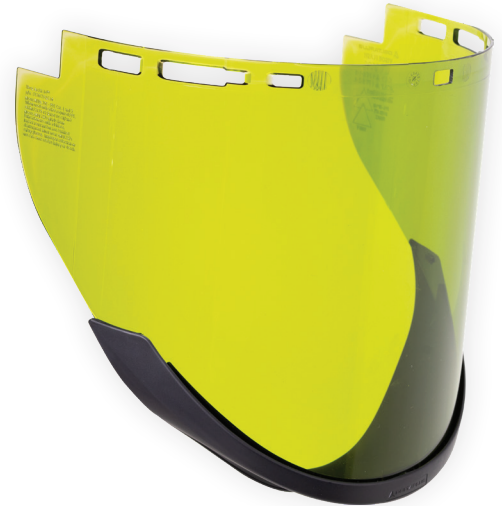


ArcSafe® Elvex Arc Shield Faceshield

Arc Rating: ATPV – 14cal/cm; PPE2

The ArcSafe® Elvex Arc Shield allows a greater range of head movement and field of vision when compared to competitive models. New lightweight, higher VLT (55%) design with a Low Profile Chin Guard.

- New improved chin guard provides extended protection under the chin while allowing a greater range of head movement. Chin guard stays out of sight when in the lowered position.
- When used with the Elvex VB-60 dielectric cap-attached visor bracket, it tilts up and out of sight in a balanced overhead position when not in use for greater worker assistance, comfort and mobility.
- Polycarbonate shield absorbs 99.9% of harmful UV A,B and C, 180-380nm
- Light green shield tint with 55% VLT (visible light transmission)
- The face shield is anti-scratch and anti-fog coated on both sides of the shield for longer service life and clear vision in temperature extremes.



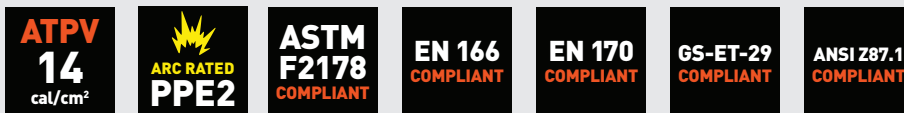
FS20ARC10KIT1



FS20ARC10KIT2



FS20ARC10KIT3



Part Number	Face Shield	Visor Holder	Hard Hat	Balaclava	Kit Bag
FS20CPARC10	*				
FS20ARC10KIT1	*	*			*
FS20ARC10KIT2	*	*	*		*
FS20ARC10KIT3	*	*	*	*	*

Kits can include:

- ArcSafe® Elvex Face Shield
- Visor Holder
- UniSafe Polycarbonate (Heat) Safety Helmet
- CarbonX Balaclava
- Kit Bag

